

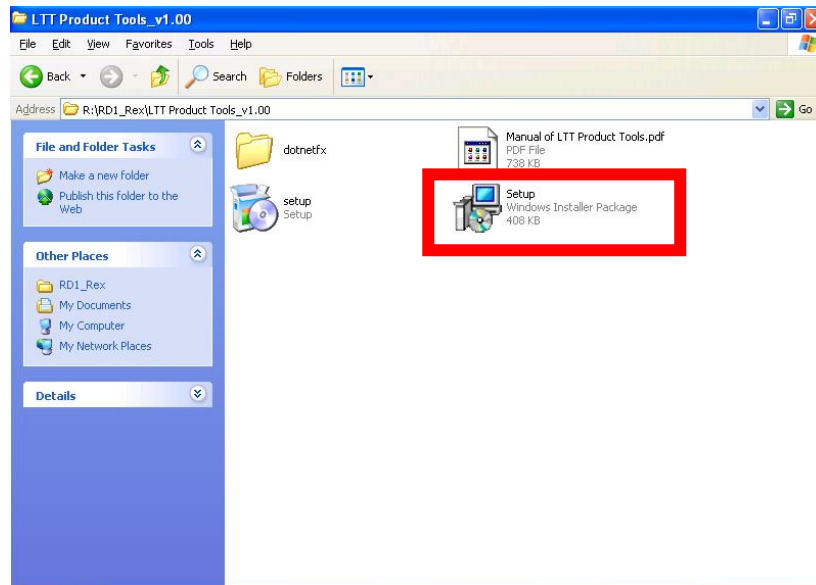
# LTT Product Tools

Here you will learn how to setup and use the LTT Product Tools for file transfer and system upgrade for all series of machine from LTT.

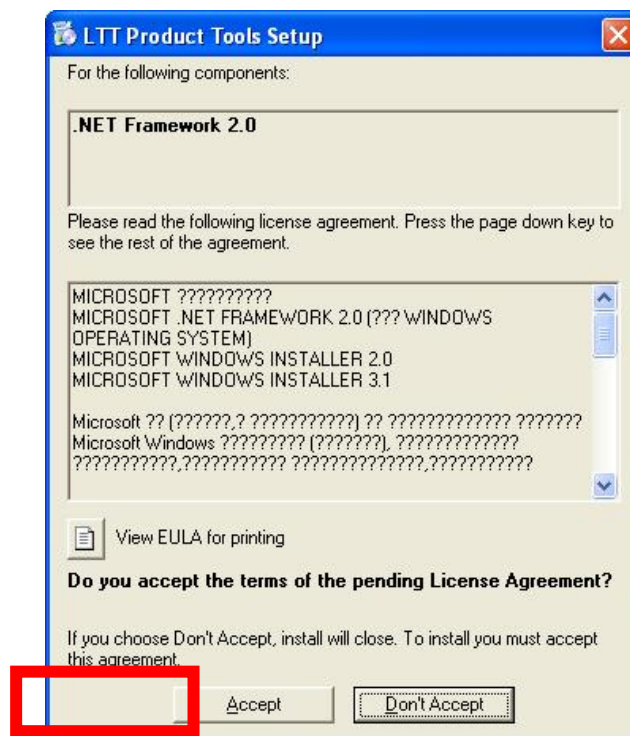
## Install Procedure

LTT Product Tools is the software which can send prn or plt file, update firmware, and change the Ethernet settings. This section explains the installation steps on your computer.

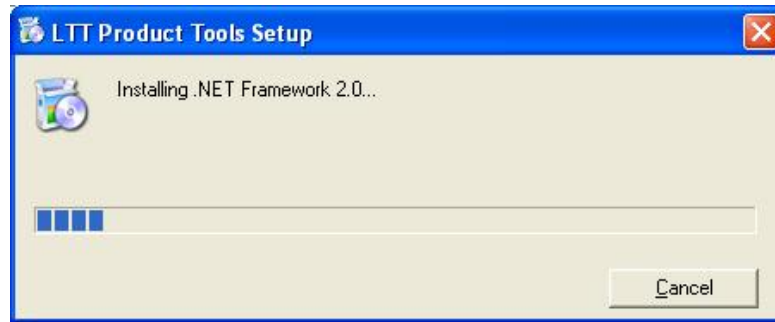
1. Double click [setup.exe], (the file is included in the installation CD)



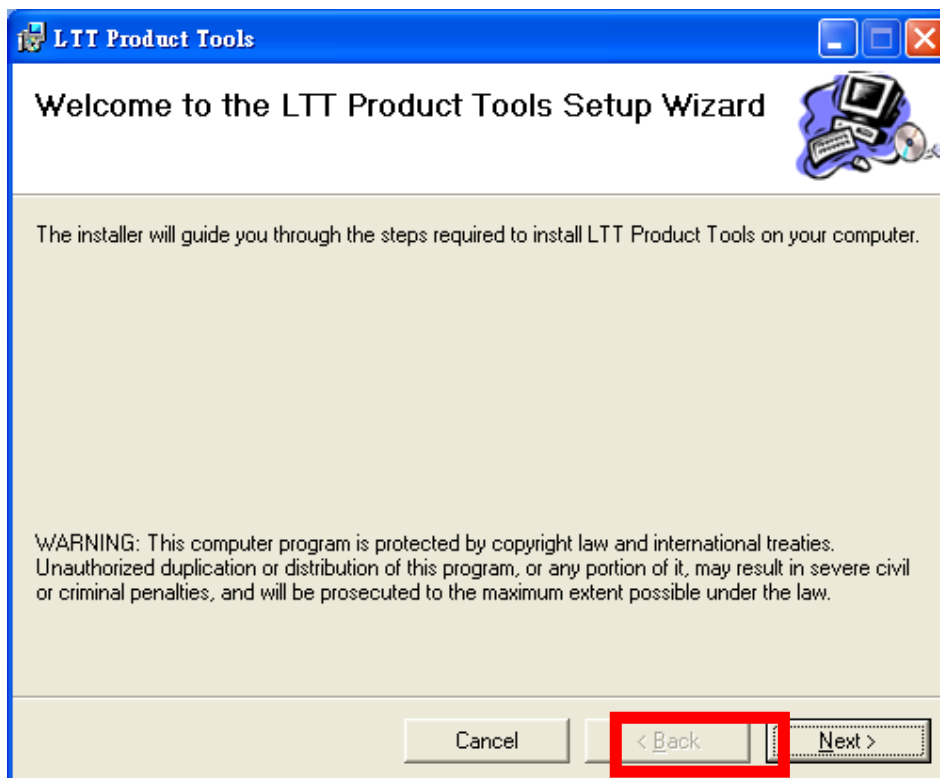
2. When you see the diagram below, please press the **[Accept]** key to go on. If not, please go to Step 4.



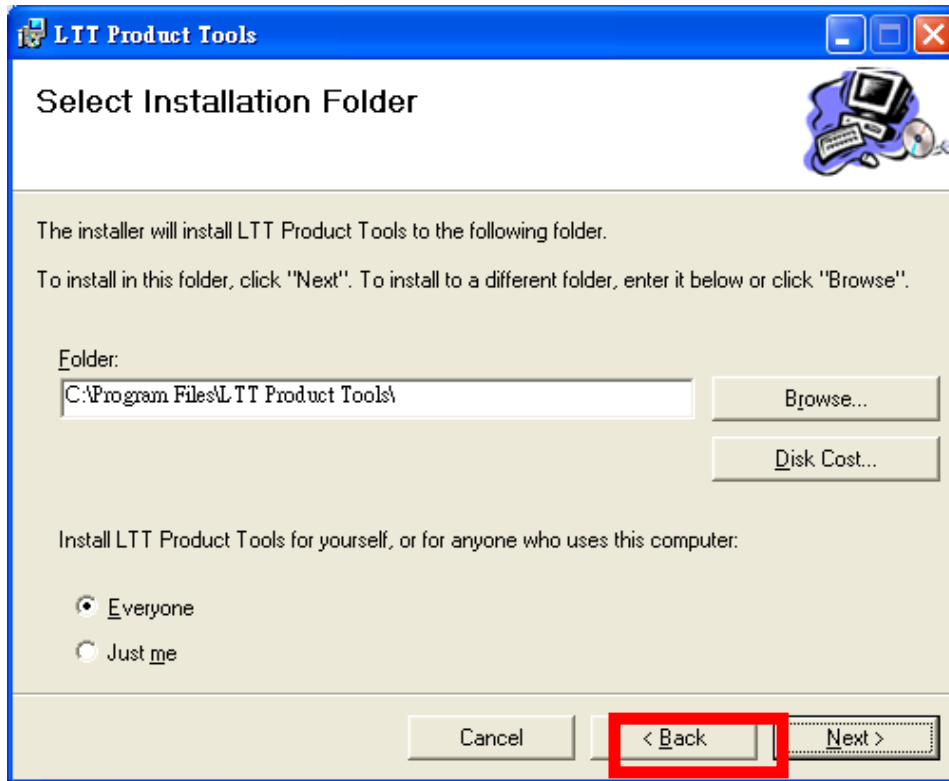
3. When you see the diagram below, please wait for some minutes.



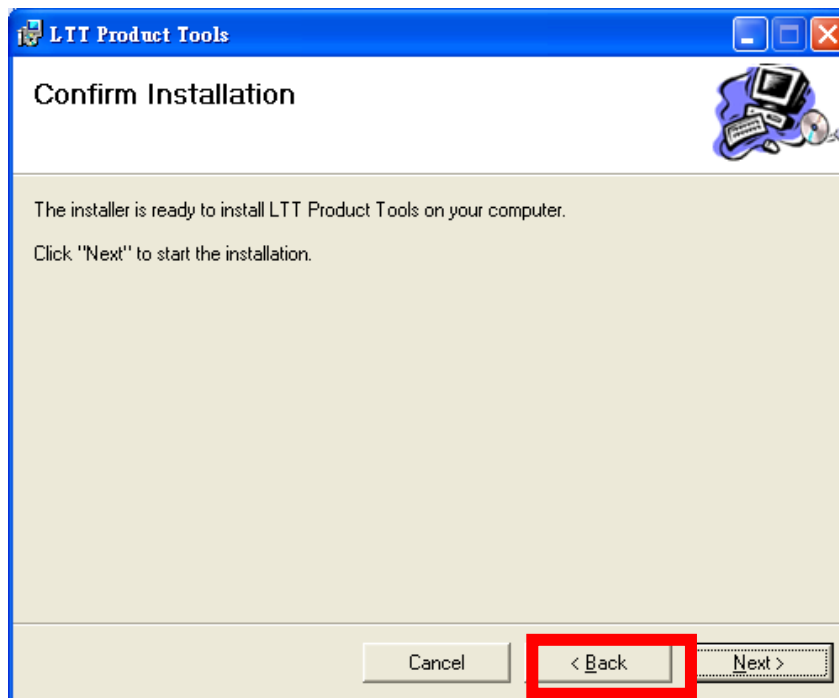
4. When you see the diagram below, please press the **[Next]** key to go on.



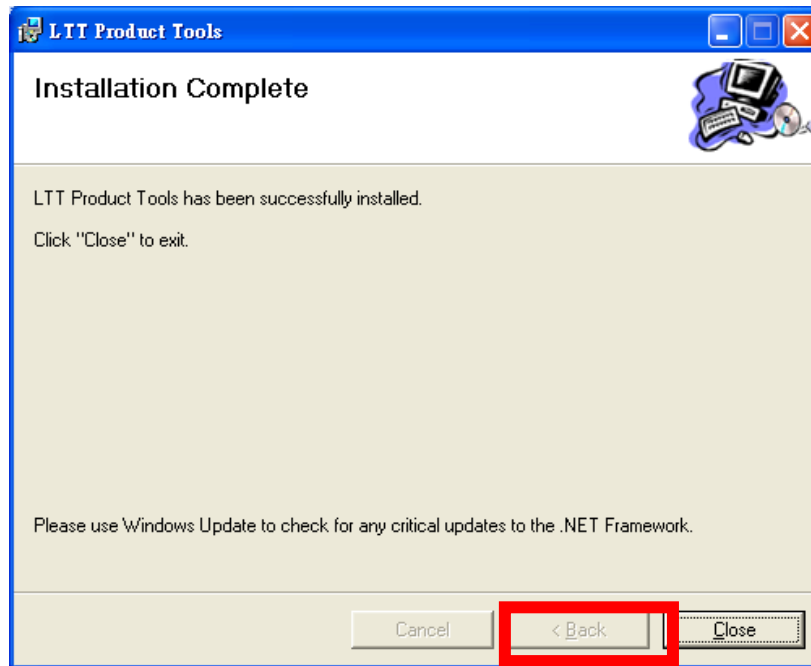
5. When you see the diagram below, please choose a position to install the software, or use the default value. And press **[Next]** key to go on.



6. Press [**Next**] key to go on.



7. Press [**Close**] key to finish the setup procedure.




8. After the setup procedure, you can open the software from two shortcuts. The first one locates on the **[Desktop]**, and the second one is placed in the **[Start Menu]**.

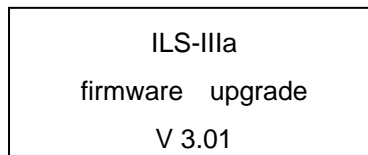


# LTT Product Tools Operation

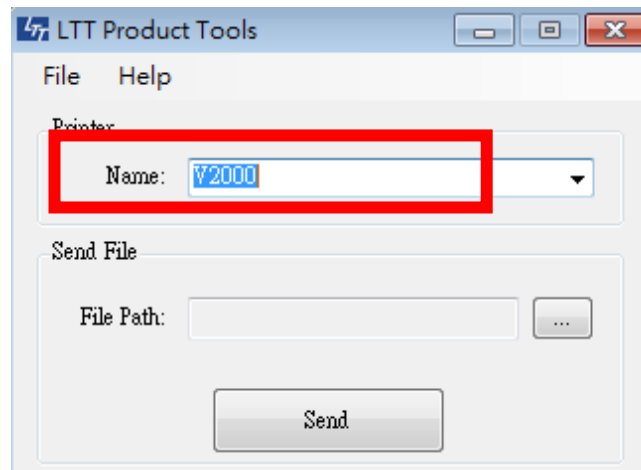
## System Upgrade

Generally, the file for upgrade will be provided from LTT. The file type is [**\*.ice**]. While upgrade is processing and the power is turned off or the cable is disconnected, the SLC-M may not be upgraded for the moment. If this situation happens, please contact LTT.

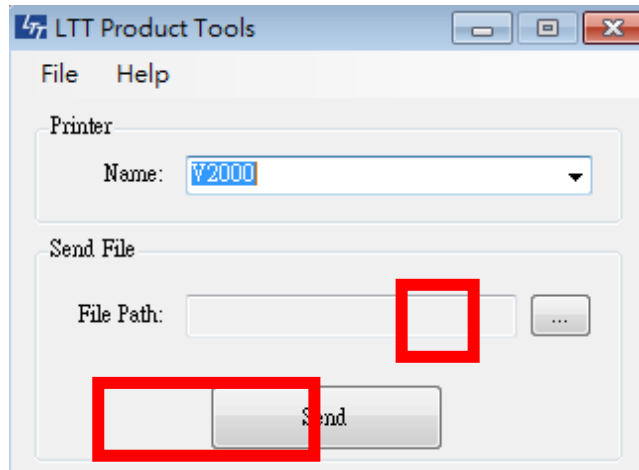
1. Turn off the SLC-M, and check that the SLC-M is connected with PC through USB cable.
2. Turn on the SLC-M and computer. Press and hold  on the control panel right after turning on SLC-M until the following screen appears.



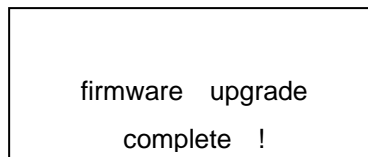
3. Run [**LTT Product Tools**], and select the printer.




- Then select the **[\*.ice]** file with **[...]** key, then press **[Send]** key to upgrade the firmware of SLC-M.



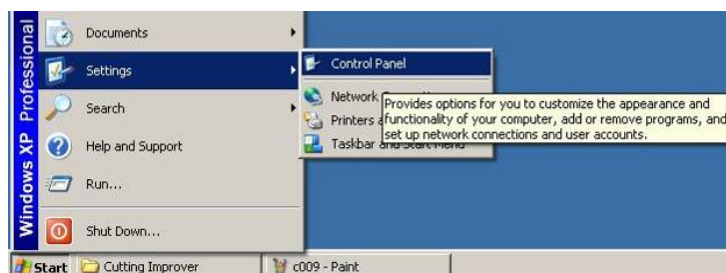
- You will hear two short beeps along with the following display, showing that the upgrade has completed successfully.



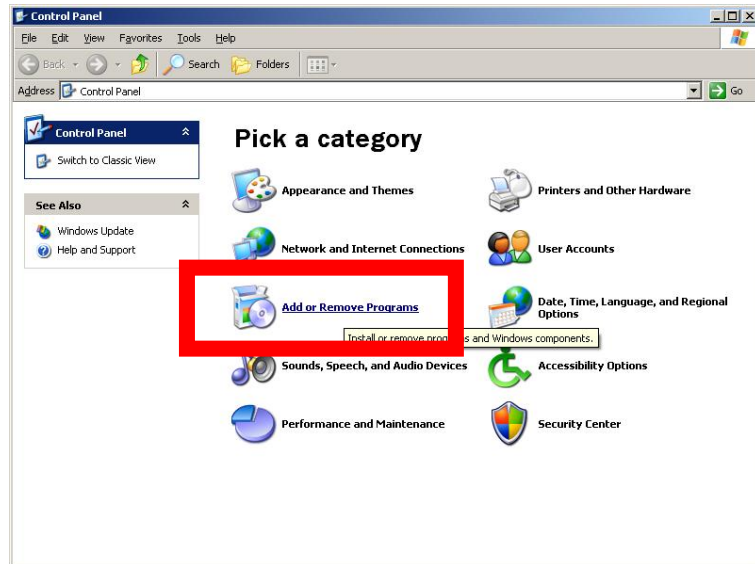
- Press  on the Control Panel and you will hear a beep after which SLC-M returns to main menu.
- Check the firmware version in the 4<sup>th</sup> line of the **[ABOUT]** submenu (See section [3.3.2](#)).

## 2.8.2 Uninstall Procedure

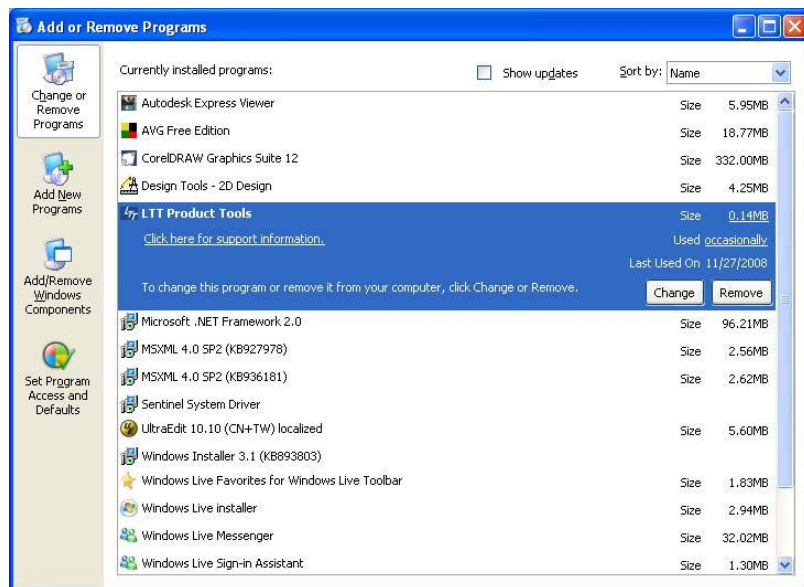
- Click **[Start]** → **[Settings]** → **[Control Panel]**



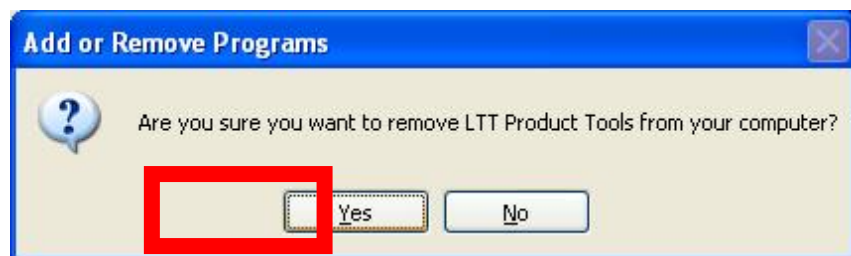
2. Double click **[Add or Remove Programs]**



3. Click **[LTT Product Tools]** → Press **[Remove]** key



4. Please choose **[Yes]**



5. Done