

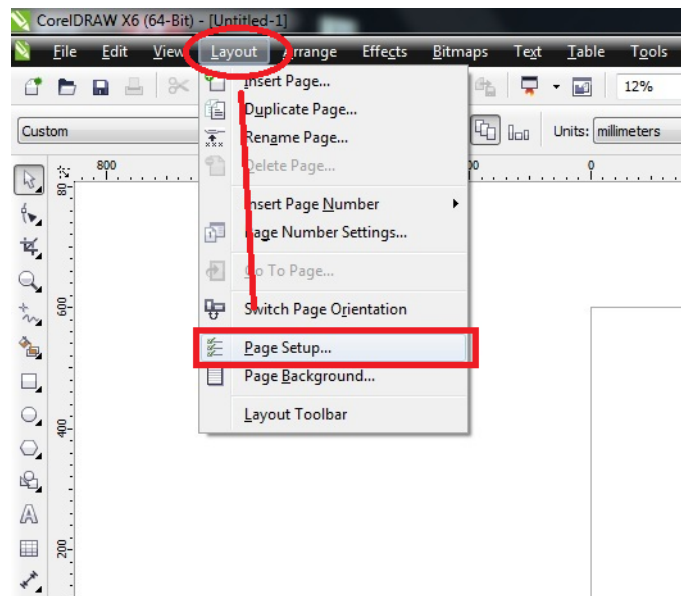
## 2.6 CoreIDRAW Setup

Here you will learn how to setup the page and print setting on CoreIDRAW for all series of machine from LTT.

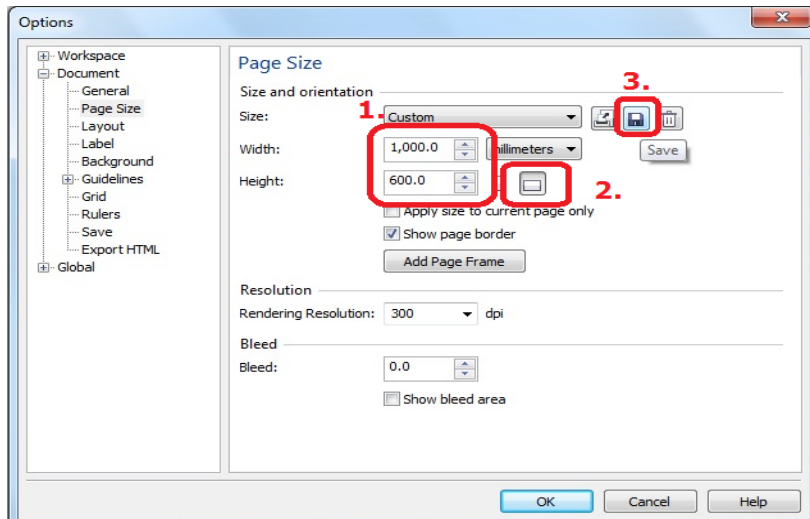
### 1. Layout setup

It is strongly recommended to keep the graphic software's page size the same with driver's page size before you begin editing files. Here you will learn how to setup your page and learn how to keep those settings that you don't have to setup again next time. If you are a Autocad user, please see section 2.7.

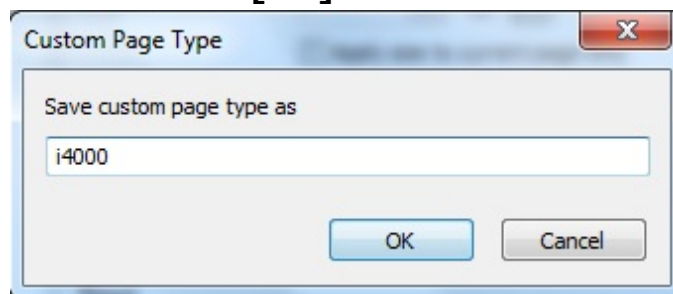
Go to [Layout]→[Page Setup...]



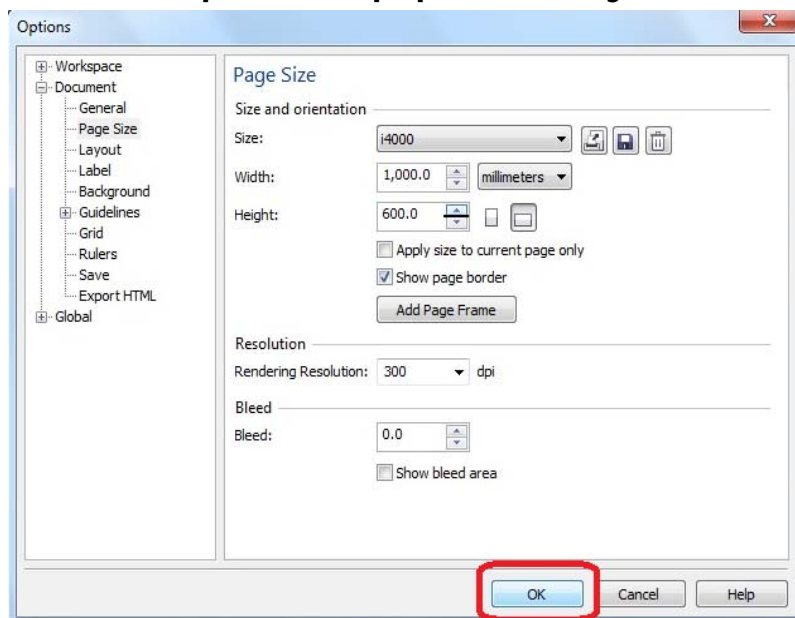
Modify [Width] and [Height] according to work area (See Appendix 1) . And click [Save Custom Page] button.



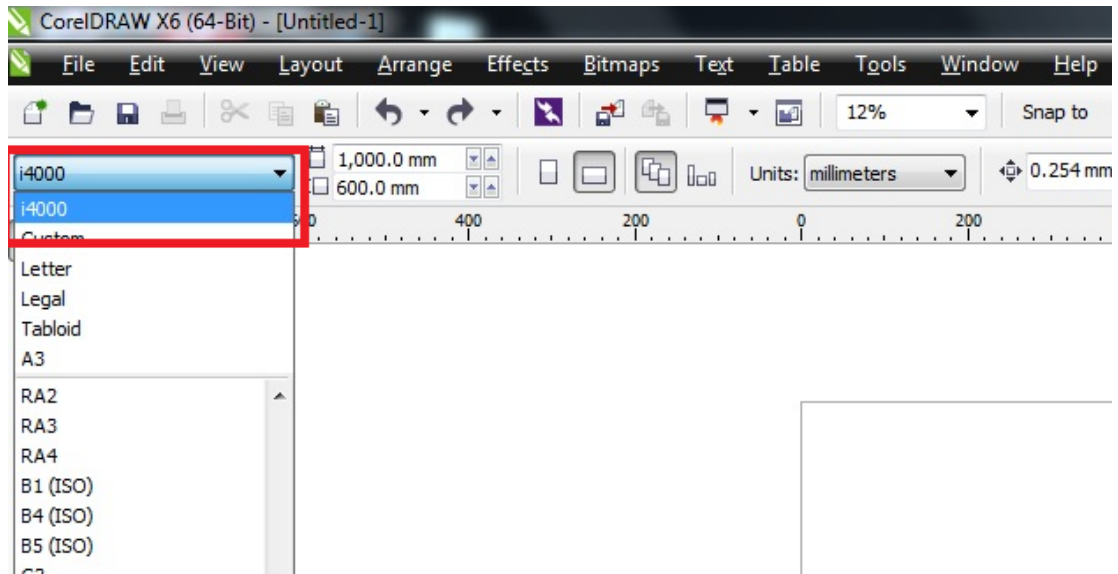
**Name this paper type. It is recommended to name with the machine type. Then click [OK] to save.**



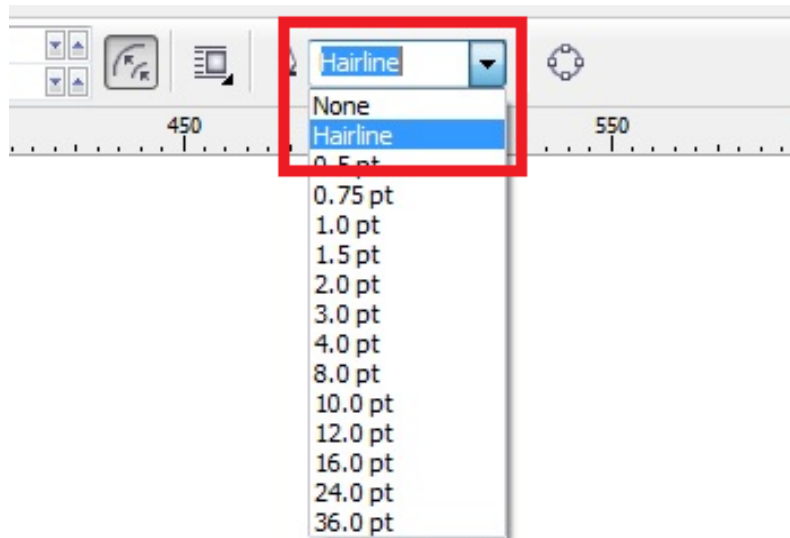
**Click [OK] to complete the paper size adjustment.**



Next time you can select template style while you create new file.

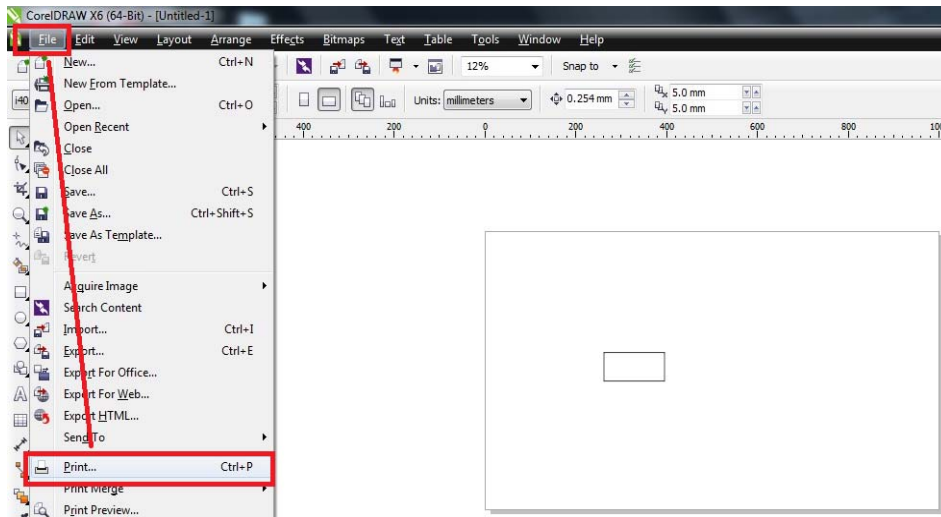


To active victor cut mode, please set the [linewidth] to [hairline]

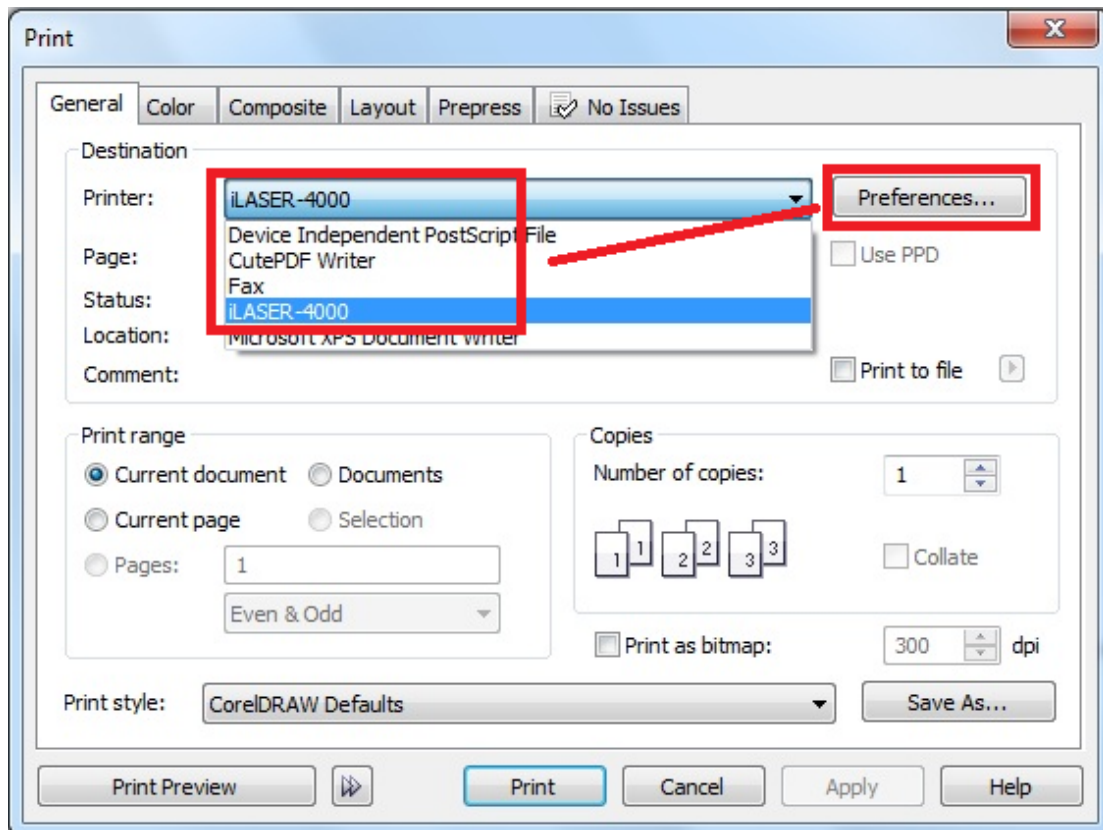


## 2.Print setup

Go to [File]→[Print...]



**When the [Print] window shows, select printer driver and click [Properties] button.**



**Modify Laser settings if need. Press [OK] to finish driver setting.**

